

V TECHNOLOGY

The Clear Choice for Those Who Want It All

Introducing the SOLJET PRO II V series, Roland's latest innovation in advanced printers and integrated printer/cutters. With the advent of V Technology, Roland has re-engineered its award winning SOLJET wide-format line to be better than ever. V Technology adds up to the ultimate standard for printing, cutting, ink, media and RIP technology, and makes the SOLJET PRO II V series ideal for all advanced wide-format applications.



Specifications	SJ-1045IS	SJ-745EX	SJ-645EX	SC-545EX	
Printing/cutting method		Pico Inkjet method		Pico Inkjet method/media moving method	
Acceptable media widths	While the print heater is running	1220 to 2641 mm (48 to 104 in.)	500 to 1879 mm (19-11/16 to 74 in.)	500 to 1371 mm (19-11/16 to 54 in.)	
	While the print heater is not running		210 to 1879 mm (8-5/16 to 74 in.)	210 to 1371 mm (8-5/16 to 54 in.)	
Printing/cutting width	Maximum 2600 mm (102.3 in.)	Maximum 1869 mm (73-9/16 in.)	Maximum 1615 mm (63-9/16 in.)	Maximum 1346 mm (53 in.)	
Ink cartridges	Type		Exclusive ECO-SOL INK cartridge		
	Capacity		220 cc ±5 cc		
	Colors	4 colors (cyan, magenta, yellow, and black) or 6 colors (cyan, magenta, yellow, black, light cyan, and light magenta)	6 colors (cyan, magenta, yellow, black, light cyan, and light magenta)		
Printing resolution (Printing dot resolution)		Maximum 1440 dpi			
Acceptable tool				Special blade for CMM-1 series	
Cutting speed				10 to 600 mm/s (10 to 300 mm/s in the media-feed direction)	
Blade force				30 to 300 gf	
Blade offset compensation				0.000 to 1.500 mm (0 to 0.0591 in.)	
Software resolution (When cutting)				0.025 mm/step (0.00984 in./step)	
Distance accuracy	While the print heater is running	Error of less than ±0.3 % of distance traveled, or 0.3 mm, whichever is greater (at SV-G-1270G, print travel: 1 m, temperature: 20 °C (68 °F), humidity: 50 %, PRE and PRINT heater temperature setting: 40 °C (104 °F))	Error of less than ±0.3 % of distance traveled, or ±0.3 mm, whichever is greater (at Roland SV-G-1270G, print travel: 1 m. Preset temperature for the print heater: 40 °C)		
	While the print heater is not running		Error of less than ±0.3 % of distance traveled, or ±0.3 mm, whichever is greater (at PET-G-1050, print travel: 1 m)		
Distance accuracy when cutting *1				Error of less than ±0.4 % of distance traveled, or ±0.3 mm, whichever is greater. When distance correction has been performed (when the setting for [CALIBRATION] - [CUTTING ADJ.] has been made), Error of less than ±0.2 % of distance traveled, or ±0.1 mm, whichever is greater	
Media take-up system	Roll outer diameter	Maximum 250 mm (9.8 in.)	Optional (180 mm (7-1/16 in.)) *2		
	Roll weight	Maximum 100 kg (220 lb.)	Optional (22 kg (44 lb.)) *2		
Media feed system	Roll outer diameter	Maximum 250 mm (9.8 in.)			
	Roll weight	Maximum 100 kg (220 lb.)			
Heater	Preheater and print heater, setting range for the preset temperature: 35 to 50 °C (96 to 122 °F) and print heater, setting range for the preset temperature: 30 to 50 °C	Print heater, setting range for the preset temperature: 35 to 50 °C (96 to 122 °F) *3			
Interface	Ethernet (10BASE-T/100BASE-TX, automatic switching)				
Power-saving function	Automatic sleep feature				
Power supply	Voltage and frequency	AC 200 to 240 V ±10 %, 50/60 Hz	AC 117 V ±10 %, 50/60 Hz or AC 220 to 240 V ±10 %, 50/60 Hz		
	Required power capacity	10 A	6.5 A (117 V) or 3.3 A (220 to 240 V)	5.8 A (117 V) or 2.7 A (220 to 240 V)	4.5 A (117 V) or 2.6 A (220 to 240 V)
Power consumption	During operation	Approx. 2400 W	Approx. 770 W	Approx. 640 W	Approx. 500 W (117 V) or 610 W (220 to 240 V)
	Sleep mode		Approx. 55 W		
Acoustic noise level	During operation		65 dB (A) or less (according to ISO 7779)		
	During standby		40 dB (A) or less (according to ISO 7779)		
Dimensions (With stand)		3894 (W) x 1159 (D) x 1394 (H) mm (153.4 (W) x 45.7 (D) x 54.9 (H) in.)	3134 (W) x 742 (D) x 1300 (H) mm (123.37 (W) x 29.14 (D) x 51.31 (H) in.)	2953 (W) x 742 (D) x 1300 (H) mm (116.51 (W) x 29.14 (D) x 51.31 (H) in.)	2699 (W) x 742 (D) x 1300 (H) mm (106.51 (W) x 29.14 (D) x 51.31 (H) in.)
		455 kg (1003 lb.)	174 kg (384 lb.)	170 kg (375 lb.)	153 kg (338 lb.)
Weight (With stand)		Temperature: 20 to 32 °C (68 to 89.6 °F), humidity: 35 to 80 % (no condensation)	Temperature: 15 to 32 °C (59 to 89.6 °F) (20 °C (68 °F) or more recommended), humidity: 35 to 80 % (no condensation)		
		Temperature: 5 to 40 °C (41 to 104 °F), humidity: 20 to 80 % (no condensation)	Temperature: 5 to 40 °C (41 to 104 °F), humidity: 20 to 80 % (no condensation)		
Environment	Power on				
	Power off				
Included items	Power cord, roll shafts, end caps, spacers, media reinforcement pipe, paper pipe, drain bottle, media gauge, media clamps, hexagonal wrenches, cap-unsol tool, cleaning kit, cleaning liquid, cartridges, software RIP, Roland-PrintServer CD-ROM, User's Manual, Setup Guide, Roland-PrintServer Network Settings Guide	Power cord, stand, hexagonal wrench, pipe, media flanges, flange retaining pins, drain bottle, bottle stand, transport bars, media reinforcement pipe, software RIP, user's manual, replacement blade for separating knife, Roland-PrintServer CD-ROM, Roland-PrintServer Network Settings Guide, SOL INK cleaning cartridges, cleaning kit (cleaning sticks, tweezers, wipers)			

*1 Not assured when the print heater is used. *2 Automatic rolling function can only be used during printing.
*3 The print heater temperature may not reach the preset temperature depending on ambient conditions or the width of the media. Unevenness in temperature may be larger depending on ambient conditions or the width of the media.

IS-1000 High Capacity Ink Delivery System		
Cartridge slots	24	
Ink	Type	Exclusive ECO-SOL INK
	Colors	4 colors (cyan, magenta, yellow, and black) or 6 colors (cyan, magenta, yellow, black, light cyan, and light magenta)
Power supply	AC adapter, Input: AC 100 V ±10 % 50/60 Hz 1.7 A, Output: DC 24 V 2.8 A	
Power consumption	Approx. 35 W	
Dimensions	732 (W) x 445 (D) x 433 (H) mm (28-7/8 (W) x 17-9/16 (D) x 17-1/16 (H) in.) (excluding the stay)	
Weight	46 kg (102 lb.)	
Environment	Power on	Temperature: 20 to 32 °C (68 to 89.6 °F), humidity: 35 to 80 % (no condensation)
	Power off	Temperature: 5 to 40 °C (41 to 104 °F), humidity: 20 to 80 % (no condensation)
Included items	Dedicated AC adapter, power cord, and User's Manual	

Roland VersaWorks System Requirements	
Operating system	Windows XP ServicePack 1 or later or Windows 2000 Service Pack 4
CPU	Computer with Pentium 4 2.0 GHz or faster recommended
RAM	1 GB or more recommended
Free hard-disk space	40 GB or more recommended

Options		
ECO-SOL MEDIA	SPVC-G-1270T	Vinyl sheet with gloss surface, adhesive, 1270 mm x 20 m (50' x 65')
	SPVCB-1870	PVC banner, 1870 mm x 15 m (74' x 49')
	SPVCB-1600	PVC banner, 1600 mm x 20 m (63' x 65')
	SPVCB-1270	PVC banner, 1270 mm x 20 m (50' x 65')
	SVB-B-1270	PVC banner, blackout, 1270 mm x 20 m (50' x 65')
	SV-G-1270G	Gray adhesive vinyl, 1270 mm x 20 m (50' x 65')
	SP-M-1270	Matte PET film, 1270 mm x 30 m (50' x 98')
	SP-P-G-1250	Glossy paper, 1250 mm x 30 m (49-3/16' x 98')
	SP-PLF-1300	Backlit film, 1300 mm x 30 m (51-1/8' x 98')
	SCM-GBMW-50-1180	Polyethylene banner, 1180 mm x 50 m (46-7/16' x 164')
	SCM-GPPG-50-914	White glossy photo paper, 914 mm x 50 m (36' x 164')
	SCM-GPPG-50-1270	White glossy photo paper, 1270 mm x 50 m (50' x 164')
	SCM-GVWG-40-1370	Monomeric calendared self adhesive vinyl white glossy-permanent adhesive, 1370 mm x 40 m (53-7/8' x 131')
	SCM-GVWG-40-1525	Monomeric calendared self adhesive vinyl white glossy-permanent adhesive, 1525 mm x 40 m (60' x 131')
	ECO-SOL INK	ESL-MG
ESL-YE		Yellow, 220 cc
ESL-CY		Cyan, 220 cc
ESL-BK		Black, 220 cc
ESL-LC		Light Cyan, 220 cc
Cleaning liquid	ESL-LM	Light Magenta, 220 cc
	SL-CL	1 pc.
Blades for SC-545EX	ZEC-U1005	For signage vinyl in general, 5 pcs.
	ZEC-U5025	For thick, reflective and fluorescent vinyl, 5 pcs.
	XD-CH3	Blade holder with blade extension adjuster, made of resin
Blade holders for SC-545EX	XD-CH2	Blade holder with blade extension adjuster, made of aluminum
	TU-750	For SJ-745EX
Take-up rollers	TU-650	For SJ-645EX
	TU-550	For SC-545EX

ISO 14001 and ISO 9001:2000 Certified

Roland pursues both environmental protection and continuous quality improvement. Under the philosophy of preserving the environment and human health, Roland DG is actively working to abolish organic solvents in production, to reduce and recycle waste, to reduce power use, and to purchase recycled products. Roland DG constantly strives to provide the most highly reliable products available.



Roland reserves the right to make changes in specifications, materials or accessories without notice. Your actual output may vary. For optimum output quality, periodic maintenance to critical components may be required. Please contact your Roland dealer for details. No guarantee or warranty is implied other than expressly stated. Roland shall not be liable for any incidental or consequential damages, whether foreseeable or not, caused by defects in such products. PostScript is a trademark of Adobe Systems Incorporated. All other trademarks are the property of their respective owners.



AUTHORIZED DEALER:

Printed in Japan. RDG90320 '05 MAY A-4 G-S

www.rolanddg.com



SOLJET PRO II
Sign Maker by Roland DG Corporation



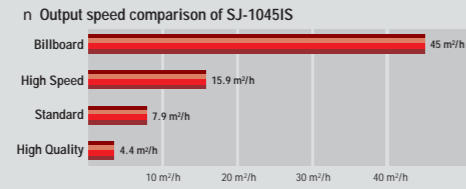
SJ-1045IS
SJ-745EX
SJ-645EX
SC-545EX

The Choice for Speed

First and foremost, V Technology is fast to meet the demanding requirements for banners and other advanced wide-format applications. In fact, V Technology brings to the PRO II V line an impressive 60% increase in speed when printing in the newly added 720 x 720 dpi print mode. This new print mode ensures the highest standards for precision while throughput remains quick and efficient. All of which adds up to better image quality and increased overall productivity for your business.

The Choice for Quality

V Technology continues to produce high quality even at high speeds. In 360 x 360 dpi Billboard print mode, the SJ-1045IS will print a 103"-wide banner in 4-color CMYK at up to 45m²/h (484 sqft/h). Primary colors remain crisp and vivid. Photos and illustrations retain their sharpness.



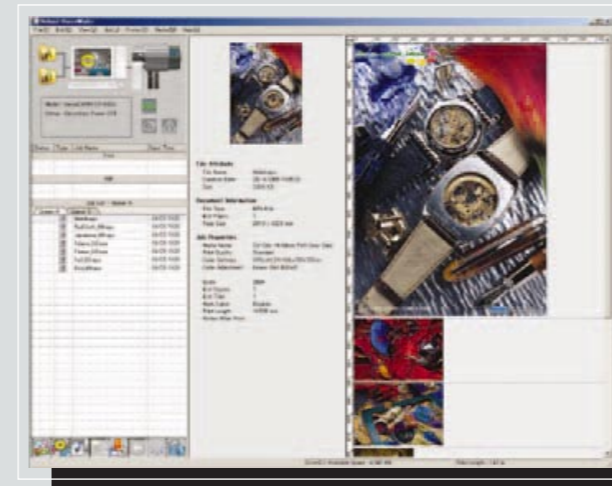
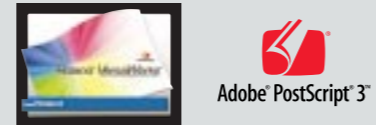
The Choice for Unmatched Artistic Reproduction

V Technology is precise. A new 1440 x 1440 dpi Artistic print mode makes the PRO II V ideal for large reproductions of artwork and photographs. This new mode allows you to maximize Roland's acclaimed printing technology, which uses Piezo print heads and digital servomotors to precisely control droplet placement in both the print head travel and paper feed directions.



Roland VersaWorks®—The Choice for Power with Ease of Use

V Technology features Roland VersaWorks, a comprehensive, professional software RIP designed expressly to take full advantage of Roland inkjet technology. Compatible with genuine Adobe® PostScript® 3™, VersaWorks ensures smooth and natural gradations with 12-bit image processing to prevent tone shifts. It features an easy-to-use interface that allows you to manage the entire production process directly from one universal screen. Intuitive icons and drag-and-drop efficiency guide you from initial design to finished print. An automatic update feature ensures that you are always working with the latest VersaWorks version and profiles. VersaWorks is compatible with Windows® XP Professional and 2000.

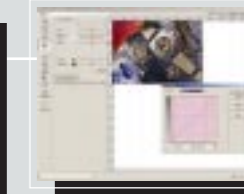
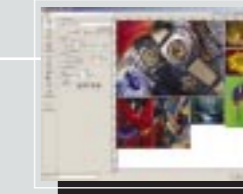


Windows® XP Professional/2000



Automatic tiling for billboards and signs

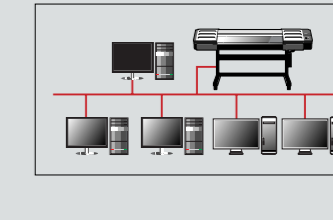
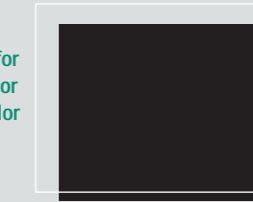
Auto layout for managing multiple jobs



Convenient controls for adjusting brightness and contrast for each color

Buttons on the Main Menu control most functions

Preview colors for different media or after making color adjustments



Supports networking environment and two input queues for different output settings



SOLJET PRO II V

Sign Maker by Roland DG Corporation



ECO-SOL INK — The Environmentally Sound Choice for Durability

Roland's PRO II V line comes complete with advanced ECO-SOL INK, environmentally friendly inks that have been formulated specifically to perform with Roland inkjets. ECO-SOL INK is virtually odor free and does not require special ventilation or environmental equipment, yet the results are outstanding. Choose ECO-SOL INK for crisp graphics that are durable up to three years outdoors without lamination.*

*Three years outdoor durability is based on accelerated weather tests conducted by Roland DG. Results may vary depending upon location and application.



The Choice for Flexibility

When it comes to media, V Technology delivers the flexibility you need for optimum performance and cost efficiency. Choose from commercially available uncoated media for excellent print quality at lower production costs. Or select Roland's genuine ECO-SOL Media for the very finest print quality, available for both outdoor and indoor applications. More than 100 ready-to-use printing profiles are available through www.rolanddg.com to ensure pleasing results with minimum effort.

The Choice for Versatility

For the ultimate in versatility, choose the SC-545EX integrated printer/cutter. The SC-545EX includes Quadralign®, the ideal solution for contour cutting laminated graphics. Quadralign automatically generates four corner crop marks, allowing you to remove a print, laminate it, and then reload it for contour cutting. The system compensates for skew and distortion, ensuring precision cutting.



Automatically generates crop marks at the four corners. Allows you to remove the print, laminate and then reload the media. Recalculates the cutting path by adjusting to the crop mark position changes.

The Choice for Optimum Results

The PRO II V line includes a full range of additional hardware features designed to maximize performance:

- The SJ-1045IS includes the new IS-1000 high capacity ink delivery system with a total ink volume of up to 5280 cc and a heavy-duty media handling system.
- A newly added 3-level lever enables you to adjust print head height to accommodate media thickness ranging from canvas or banner material to fine films.
- Built-in media edge clamps prevent print defects due to media curling.
- A sheet cutter makes trimming media as easy as pushing a button.
- A media counter allows you to record and track the amount of media remaining on a roll and print this information on the media itself.
- The print head cleaning system keeps print heads in top condition for long-term use.



Built-in Media Edge Clamps Print Head Cleaning System



SJ-1045IS
104" PRINTER
With IS-1000 high capacity ink delivery system

SJ-745EX
74" PRINTER

SJ-645EX
64" PRINTER

SC-545EX
54" PRINTER/CUTTER
Print & Cut logo