



## CONTENTS

- |  |        |
|--|--------|
| 1. Printing the Roland Colour System from Versaworks.....    | Page 1 |
| 2. Adding the Roland Colour System palette to Coreldraw..... | Page 6 |

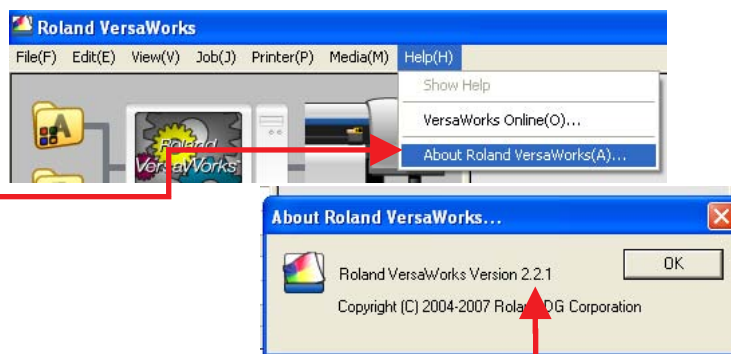
# Printing the Roland Colour System from Versaworks

Roland has introduced a great new feature to their system that allows you to match colours with far greater accuracy. The Roland Color System is a library of predefined colors that you can print with repeatable accuracy from Versaworks, embed in your graphics program and print as a swatch book or wall chart.

Follow the steps in this guide in order to get your print setup working with the new Roland Color System.

**1** Open Versaworks and check that you have Version 2.2 or later by clicking on |Help(H)| and then |About Roland VersaWorks (A)...|

If you need a newer version, contact your local Roland agent or read the guide on updating your Versaworks available at [www.roland.co.za](http://www.roland.co.za).



Check here if your version is up to date.

**2** The colour chart will be generated according to your queue A default settings. Please make sure to change them to what you want before adding the chart to your queue. To do this, double click on the Queue A defaults button or click |edit|queue A settings|:

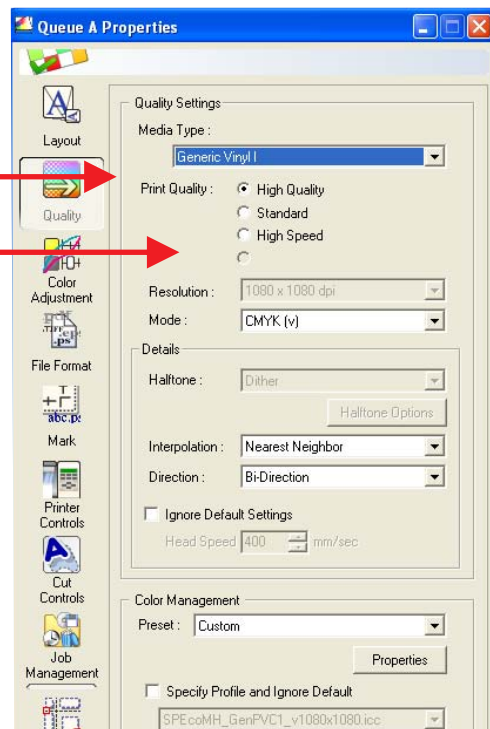


Corel X3, Corel Draw, Windows, Roland, Versaworks are copyright their respective owners.

**3** Choose the “Media Type” you are using and the “Print Quality” you want to use for your swatch book.

(You need to switch to the “Quality “ tab in the settings window )

Make sure you have the rest of your quality settings correct. (If you need more information on these settings look in the Versaworks Help files or get more guides at [www.roland.co.za](http://www.roland.co.za))

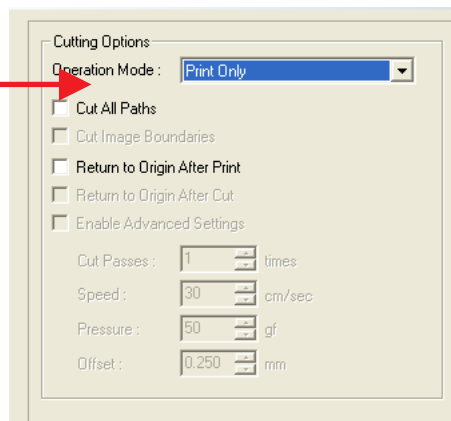


**4** If you are planning to print colour chips on a media without a backing sheet you need to turn off the cutting option by clicking on “Cut Controls”



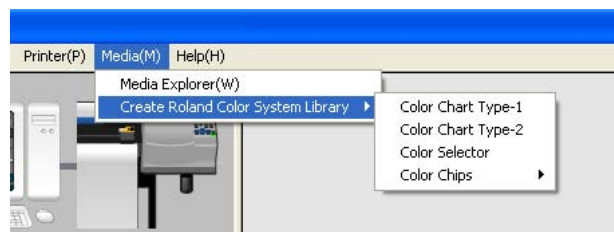
and selecting “Print Only”.

When done, click “OK”.



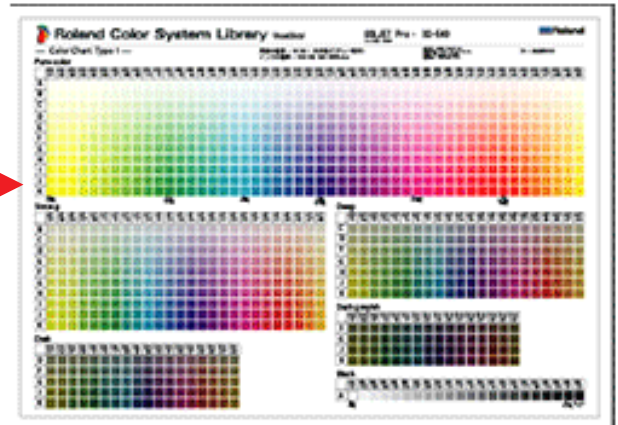
**5** Click on |Media (M)| then choose |Roland Color System Library >|

Select the type of Library you want to print (see p.3). It will then be added to your Queue A.

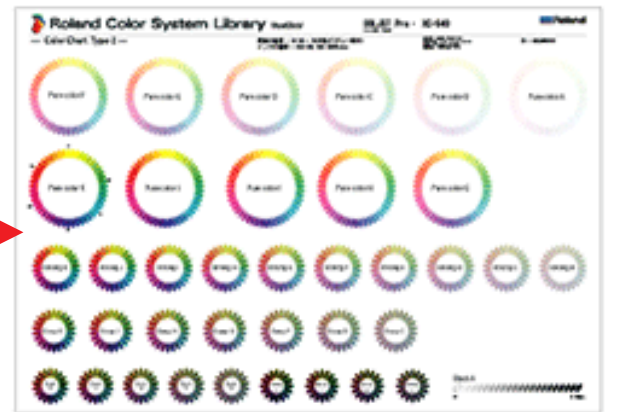


**6** There are 4 Roland Color System Libraries you can print.

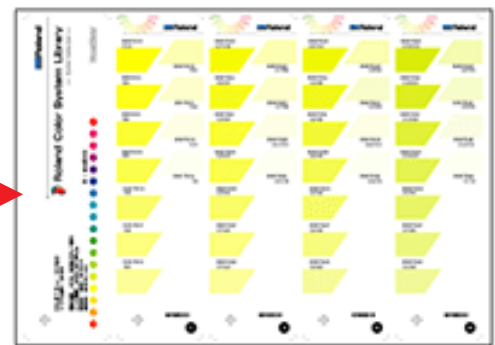
Color Chart Type1 is an A1 wall chart that gives you a fair idea of the colour range of the Roland Color System by displaying the colours by hue horizontally and brightness vertically.



Color Chart Type2 is an A1 wall chart that sorts the colors by tone.



Color Selector is a swatch book of over 1000 colours printed on 22 A4 sheets. You then cut each of these into 5 strips on the included cut lines and make your own book.

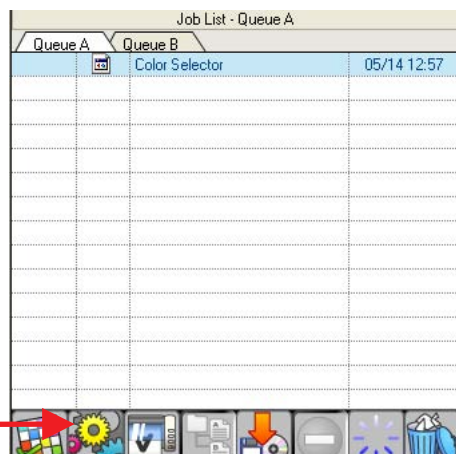


Color Chips give you A4 sheets with 12 stickers of each colour to give to your customers or to remove and check a sample. They are conveniently split into groups.



# Printing the Roland Colour System from Versaworks

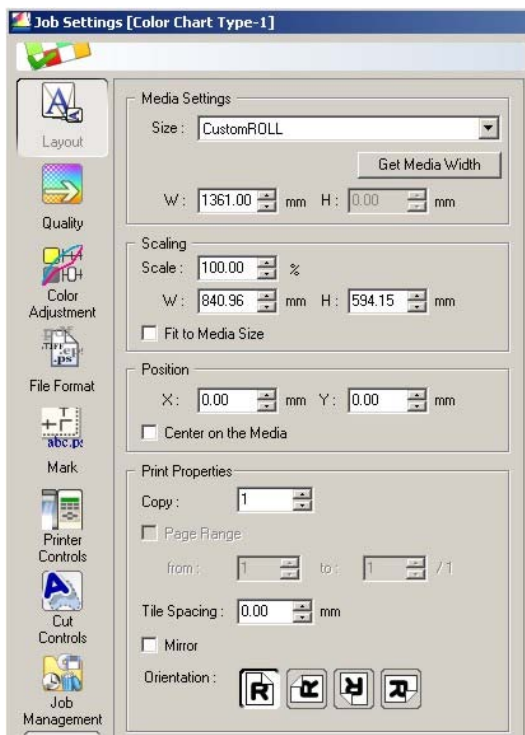
**7** Once the job is in your queue, select it and click on Settings.



Click the layout tab.

Here you can change the size of your chart, as well as position, rotation and number of copies.

Be sure to click on the "Get Media Width" button and then click "OK".

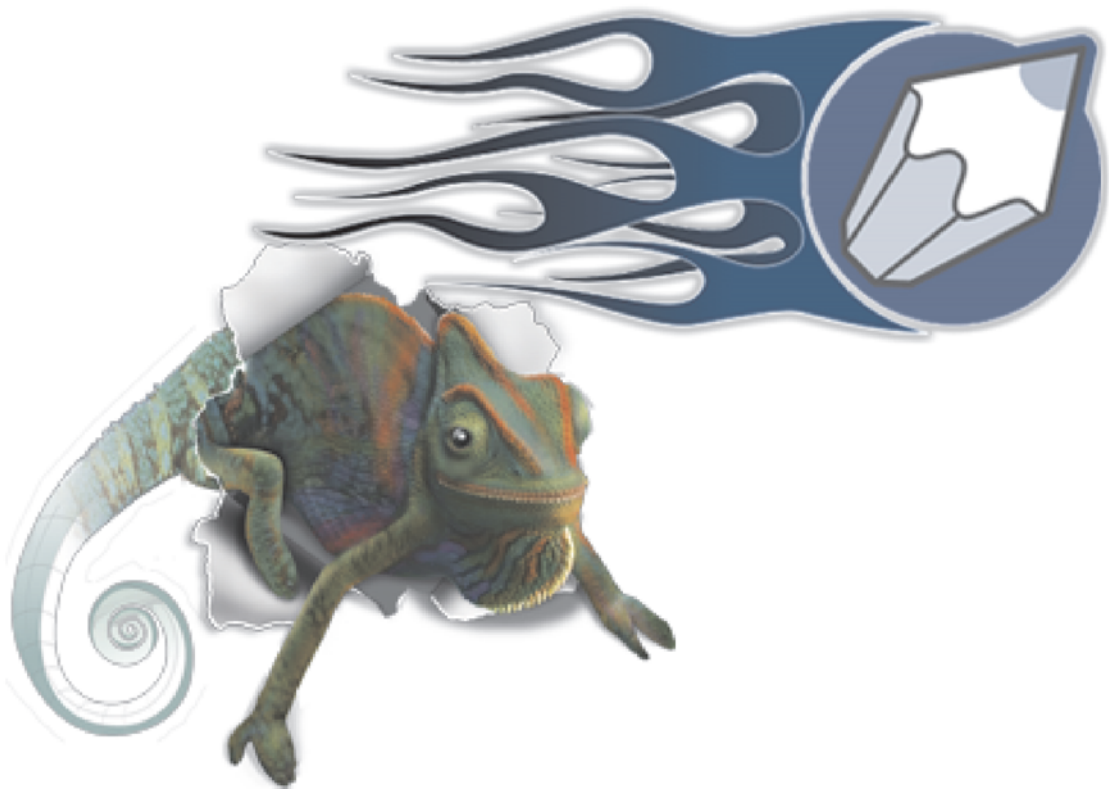


**8** Once you are happy with all your settings, click on print.



Corel X3, Corel Draw, Windows, Roland, Versaworks are copyright their respective owners.

# Adding the Roland Colour System palette to CorelDRAW

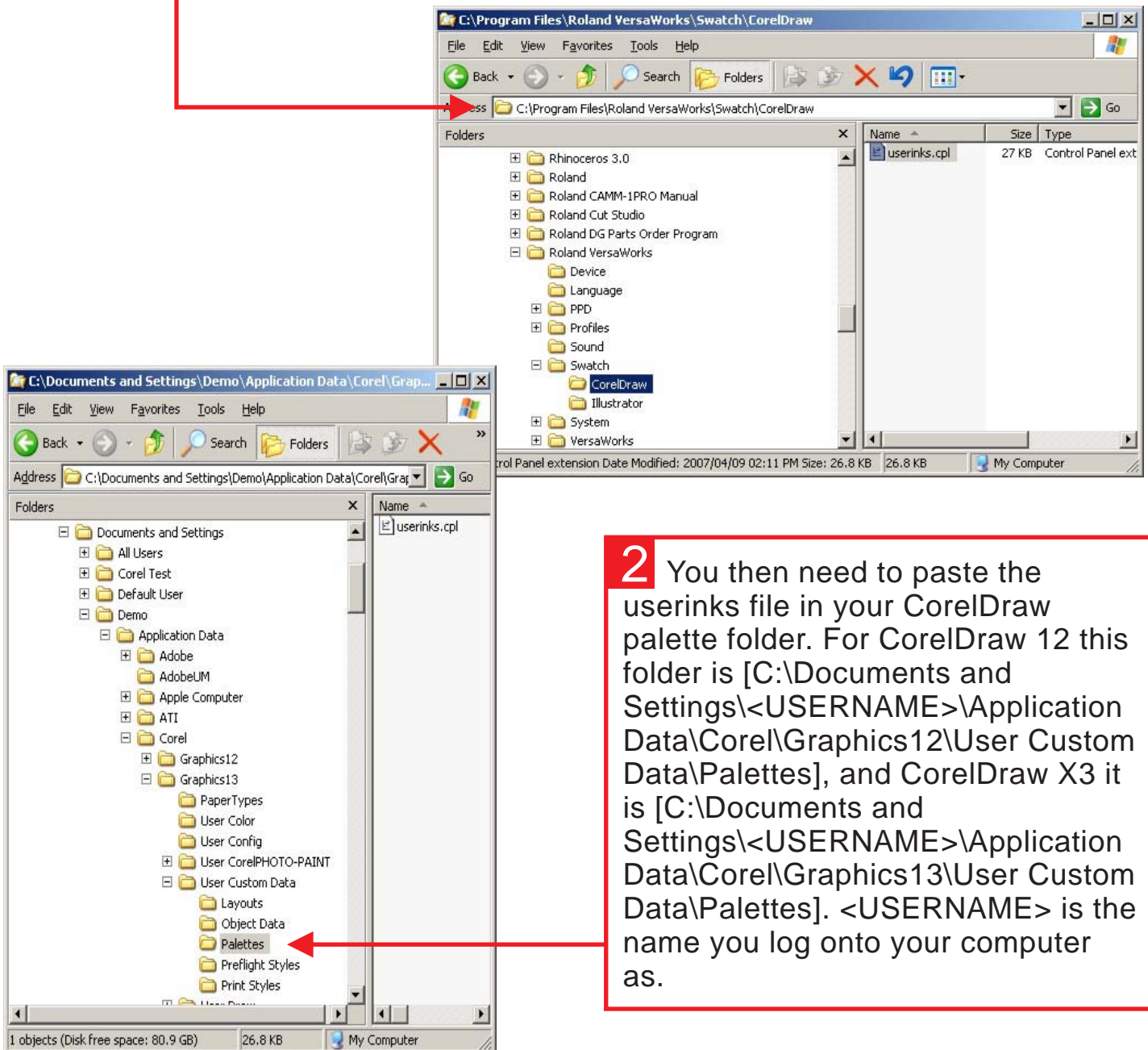


Corel X3, Corel Draw, Windows, Roland, Versaworks are copyright their respective owners.

# Adding the Roland Colour System palette to CorelDRAW

If for any reason you can't complete this section, or just don't want to, You can download the auto installer from the provided link.

**1** Use windows explorer to browse your computer to where Roland VersaWorks is installed (normally C:\Program Files\Roland VersaWorks). Then go to Swatch and CorleDraw. Right click on userinks, and click copy



**2** You then need to paste the userinks file in your CorelDraw palette folder. For CorelDraw 12 this folder is [C:\Documents and Settings\<USERNAME>\Application Data\Corel\Graphics12\User Custom Data\Palettes], and CorelDraw X3 it is [C:\Documents and Settings\<USERNAME>\Application Data\Corel\Graphics13\User Custom Data\Palettes]. <USERNAME> is the name you log onto your computer as.

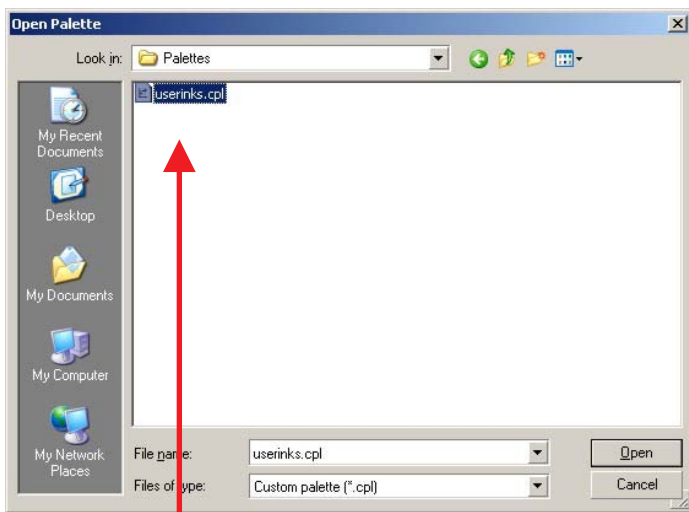
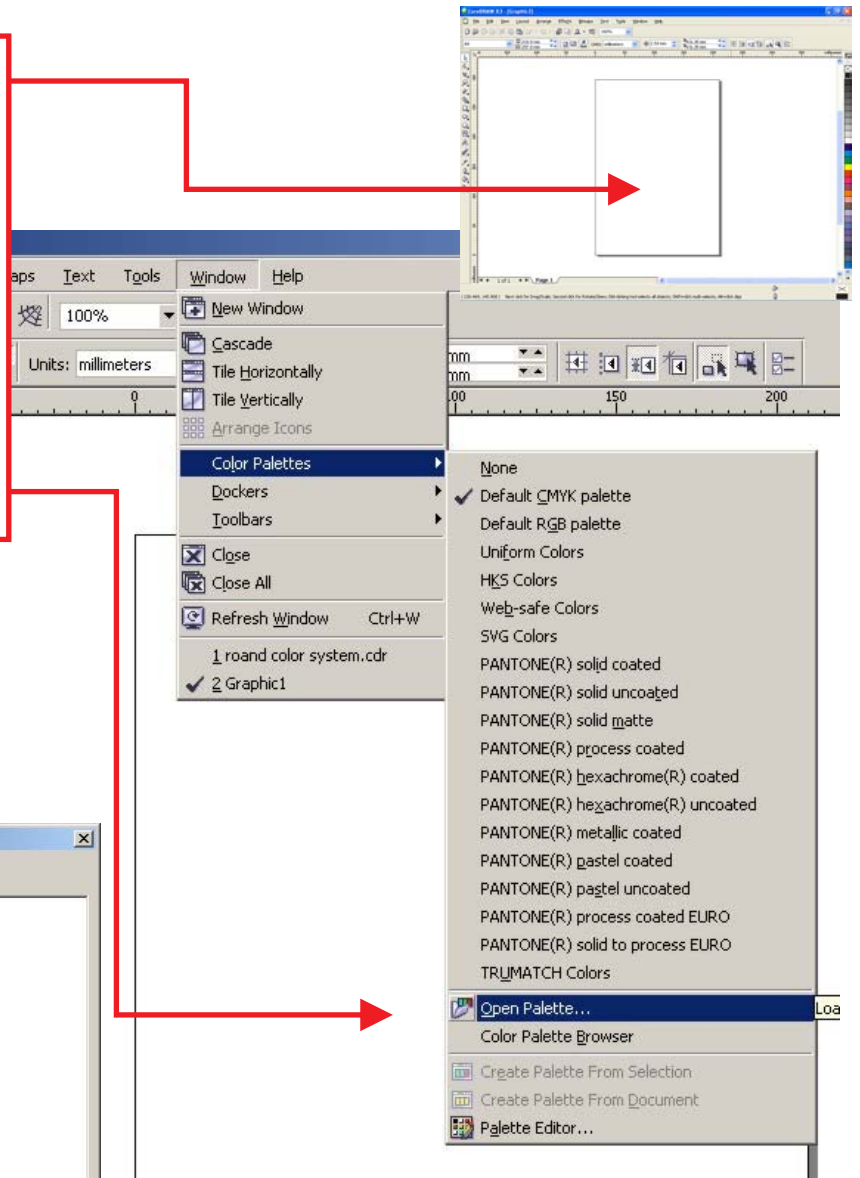
Corel X3, Corel Draw, Windows, Roland, Versaworks are copyright their respective owners.

# Adding the Roland Colour System palette to CoreIDRAW

**3** Open CorelDraw and start a new document (|File| and then |New|)

Click on |Window| and choose the |Color Palettes| menu option.

Under that choose |Open Palette...|



**4** Browse to folder we earlier copied the file to and open "userinks.cpl"

Corel X3, Corel Draw, Windows, Roland, Versaworks are copyright their respective owners.

**5** You will now have a new palette on the right hand side of your Corel workspace.

You will see that the names of the spot colours in this new palette have names like “RVW-DG04J”. These names correspond to the names on the swatch book/chart that you have printed.

The first colour in the palette is your CutContour to use with your Roland Print&Cut machine.

**6** The next step is to make sure that you have swatchbooks/charts for each of the media types that you commonly print on in the qualities that you normally print.

If a customer comes in with a business card and asks you to match the colour of his logo on a sign then you can take out your swatch book and get him to approve the colour match before you print.

If you define a fill colour in Corel using this Roland Library the final print will be the same as your swatch.

Remember to make sure your PDF export settings are correct by following the guide at [www.roland.co.za/](http://www.roland.co.za/)

Tip: If you right click on a colour while an object is selected it will assign that colour as an outline. If you left click it will be the fill colour.

