

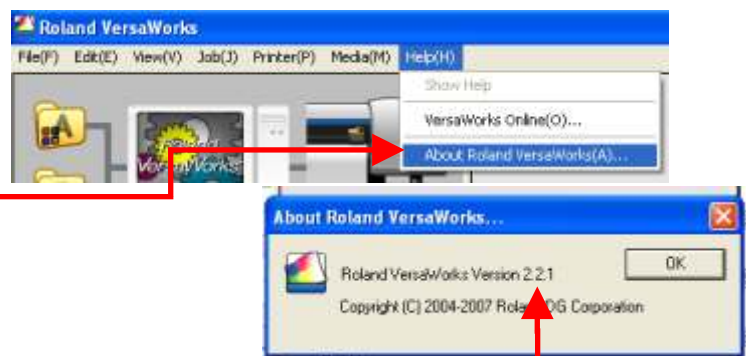
Working with the Roland Color System in Corel X3

Roland has introduced a great new feature to their system that allows you to match colours with far greater accuracy. The Roland Color System is a library of predefined colors that you can print with repeatable accuracy from Versaworks, embed in your graphics program and print as a swatch book or wall chart.

Follow the steps in this guide in order to get your print setup working with the new Roland Color System.

1 Open Versaworks and check that you have Version 2.2 or later by clicking on [Help(H)] and then [About Roland VersaWorks (A)...]

If you need a newer version, contact your local Roland agent or read the guide on updating your Versaworks available at www.roland.co.za.




Check here if your version is up to date.

2 The charts get generated according to your queue settings so you need to set up your default queue settings before loading the print. Double click on the Queue A defaults button or click [edit|queue A settings]:

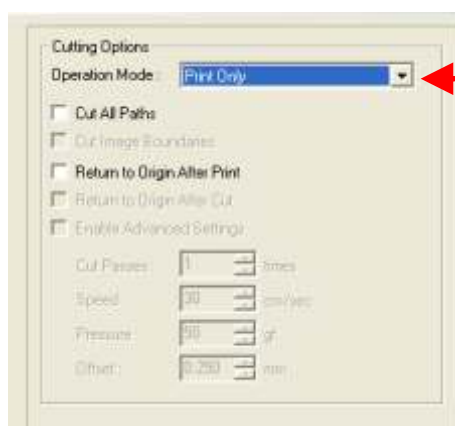
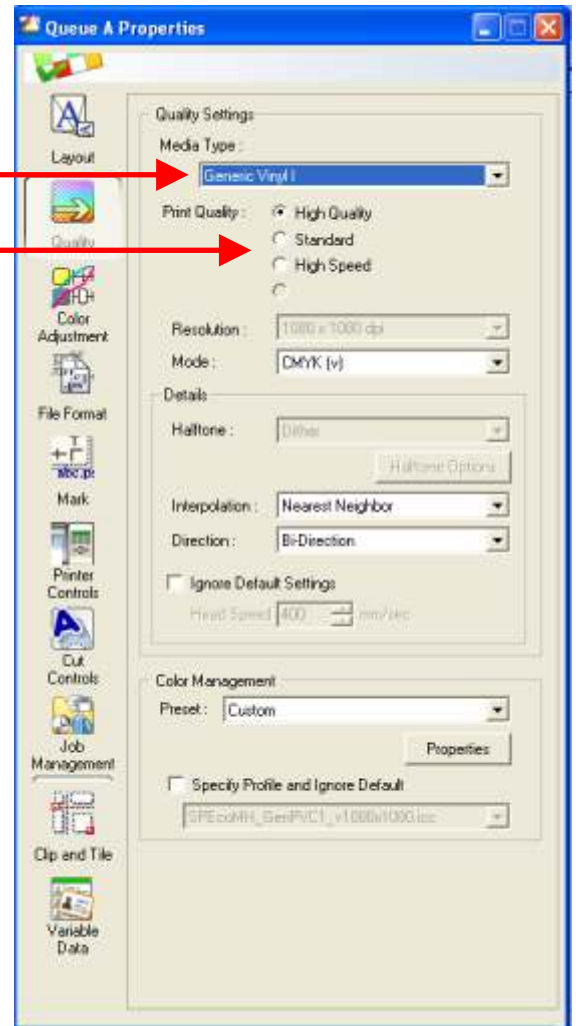


Corel X3, Corel Draw, Windows, Roland, Versaworks are copyright their respective owners.

3 Choose the “Media Type” you are using and the “Print Quality” you want to use for your swatch book.

(You need to switch to the “Quality “ tab in the settings window )

Make sure you have the rest of your quality settings correct. (If you need more information on these settings look in the Versaworks Help files or get more guides at www.roland.co.za)



4 If you are planning to print colour chips on a media without a backing sheet you need to turn off the cutting option by clicking on “Cut Controls”



and selecting “Print Only”.

When done, click “OK”.

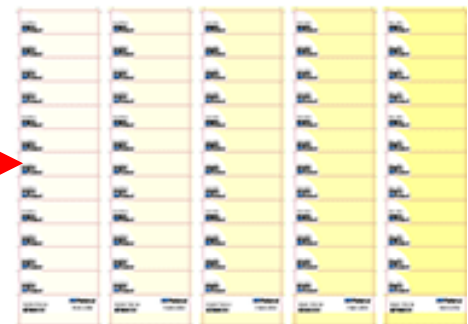
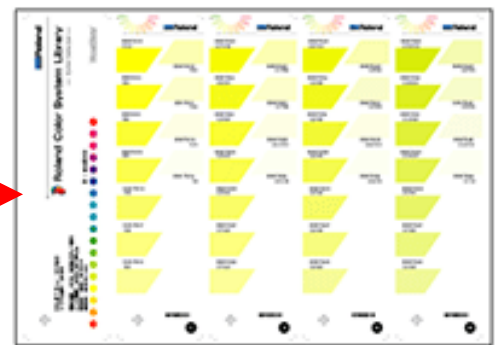
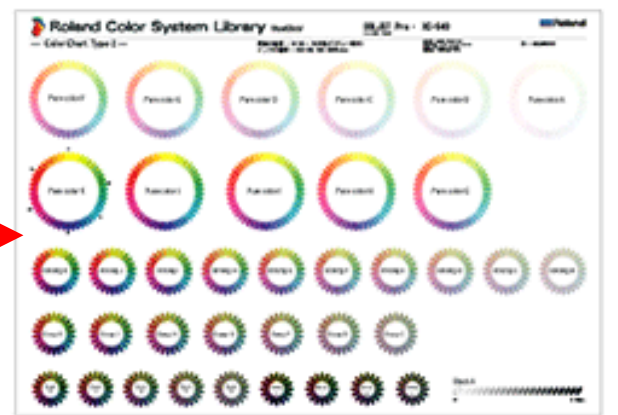
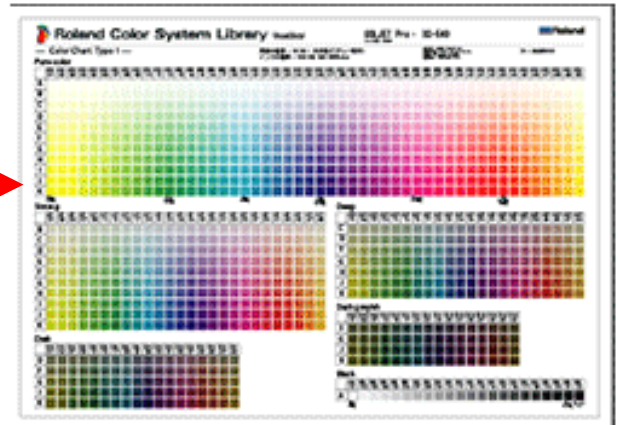
5 There are 4 types of Roland Color System Libraries you can print.

Color Chart Type1 is an A1 wall chart that gives you a fair idea of the colour range of the Roland Color System by displaying the colours by hue horizontally and brightness vertically.

Color Chart Type2 is an A1 wall chart that sorts the colors by tone.

Color Selector is a swatch book of over 1000 colours printed on 22 A4 sheets. You then cut each of these into 5 strips on the included cut lines and make your own book.

Color Chips give you A4 sheets with 12 stickers of each colour to give to your customers or to remove and check a sample. They are conveniently split into groups.



6 Click on |Media (M)| then choose |Roland Color System Library >|

Choose the type of Library you want to print and then wait while it loads in your Queue A.

Versaworks will create the chart/book according to your queue settings and printer type.

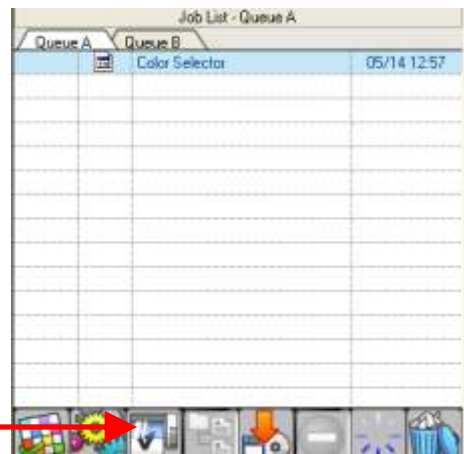
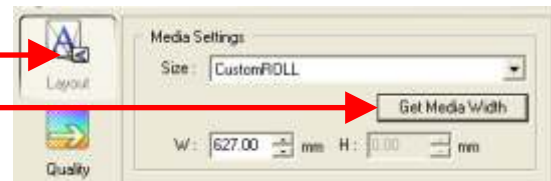
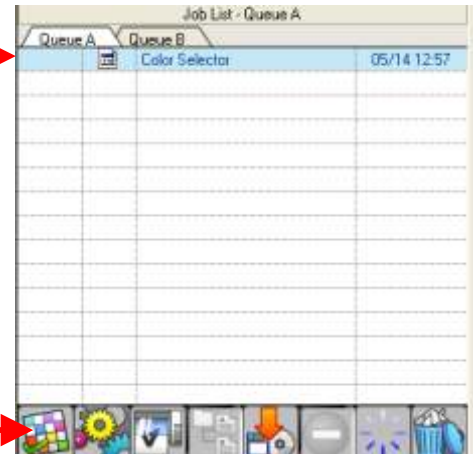
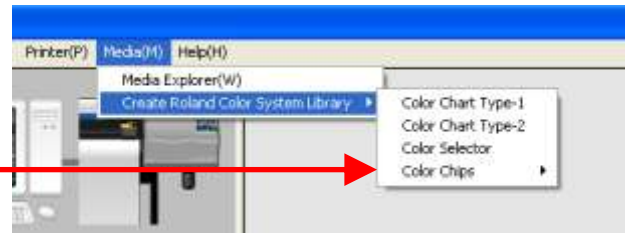
Select your job in Queue A.

Click on Settings.

Edit your "Layout".

Make sure you click on the "Get Media Width" button and then click "OK".

Then click on "Print" to print your chart/swatch.

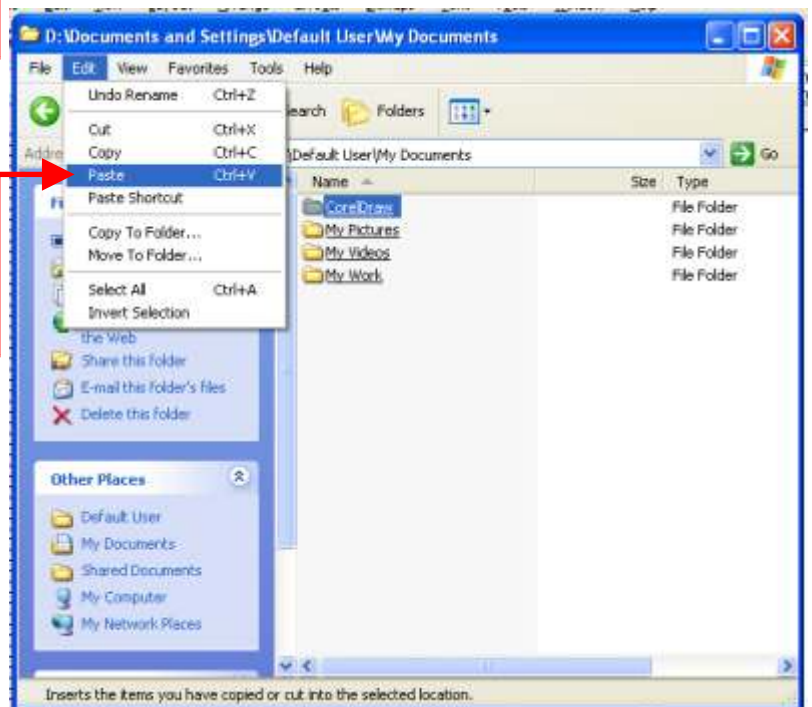
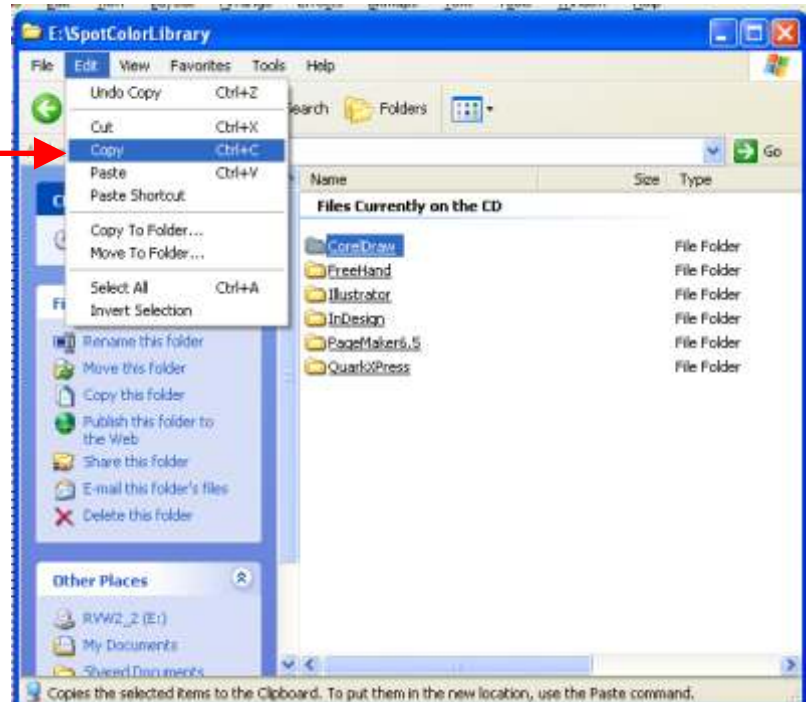


7 Now that you have a color sample that clearly shows how your printer interprets each of the colours in the Roland Colour System library you need to make sure that you can define those colours in your artwork.

Use Windows Explorer to browse your Versaworks CD. (If you go to “My Computer” and right click on the CD drive you need to choose “open” to make sure it doesn’t just run the installer for Versaworks”)

On your CD you will find a folder called “SpotColorLibrary”. Open it and copy the folder called “CorelDraw” to your “My Documents” folder.

(To copy a folder you right click on the folder and select “copy”. You then go to the folder where you would like the “CorelDraw” folder and you right click on an open area and choose “paste”.)

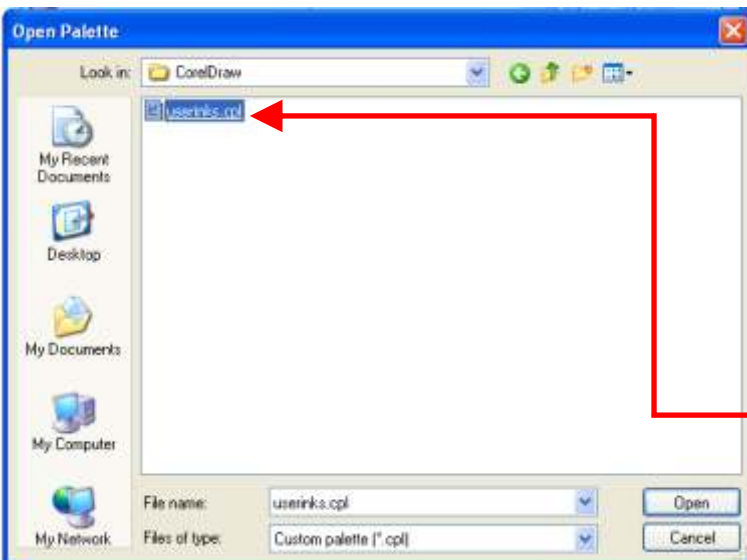
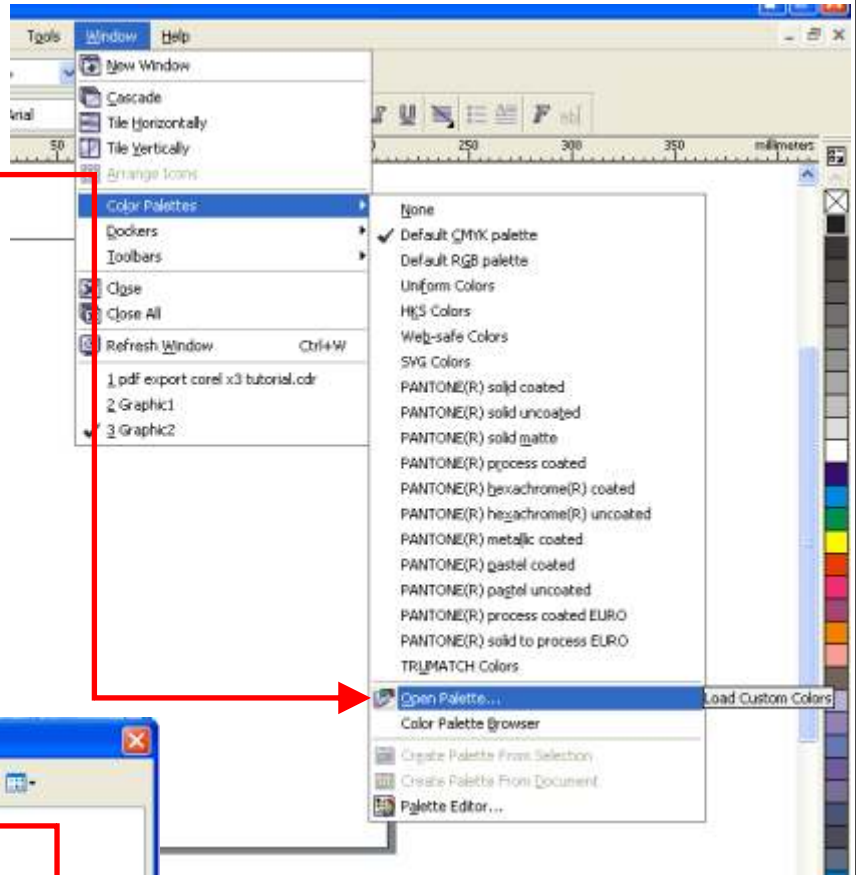
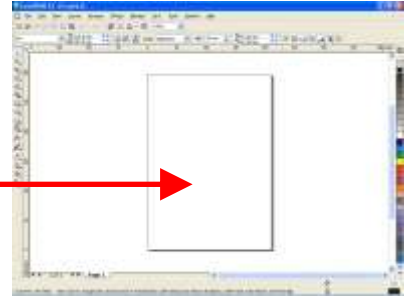


Working with the Roland Color System in Corel X3

8 Open CorelDraw and start a new document (|File| and then |New|)

Click on |Window| and choose the |Color Palettes| menu option.

Under that choose |Open Palette...|



Browse to "My Documents", open the "CorelDraw" folder and open the file "userinks.cpl"

Corel X3, Corel Draw, Windows, Roland, Versaworks are copyright their respective owners.

9 You will now have a new palette on the right hand side of your Corel workspace.

You will see that the names of the spot colours in this new palette have names like "RVW-DG04J". These names correspond to the names on the swatch book/chart that you have printed.

The first colour in the palette is your CutContour to use with your Roland Print&Cut machine.

10 The next step is to make sure that you have swatchbooks/charts for each of the media types that you commonly print on in the qualities that you normally print.

If a customer comes in with a business card and asks you to match the colour of his logo on a sign then you can take out your swatch book and get him to approve the colour match before you print.

If you define a fill colour in Corel using this Roland Library the final print will be the same as your swatch.

Remember to make sure your PDF export settings are correct by following the guide at www.roland.co.za/

Tip: If you right click on a colour while an object is selected it will assign that colour as an outline. If you left click it will be the fill colour.

